

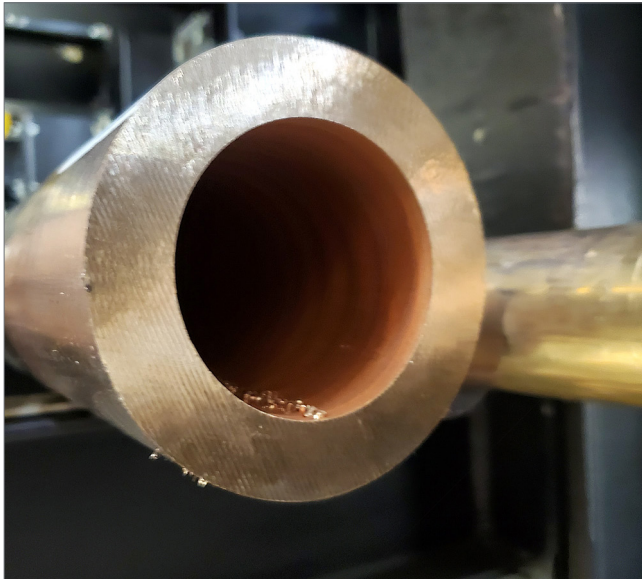


THAMES
STOCKHOLDERS

SAE660

LEADED BRONZE ALLOY

Page: 1 of 1



Product Overview

SAE660 leaded bronze is suitable for various engineering applications performed under medium loads whilst using adequate lubrication.

The alloy is a continuously cast leaded copper-based material known as leaded bronze. It is highly suited to pump and valve component manufacture due to the alloy's resistance to brine. SAE660 offers good sliding and dry-running properties and is not subject to dezincification. Our product also boasts excellent machinability characteristics.

Availability:

- Round bar, hollow bar, flat bar, plate

Applications

- Valve and slide seating rings
- Hydraulic components
- Fuel and water pump bushes
- General-purpose bushes & bearings

Key Features

- Versatile - broad application usage
- Excellent anti-friction qualities
- Excellent machining properties
- Ideal in bushes and bearings under medium loads

Chemical Composition (weight, %)

	Cu	Al	Sb	Fe	Pb	Ni	P	Si	S	Sn	Zn
Min.	81.00				6.00					6.30	2.00
Max.	85.00	0.005	0.35	0.20	8.00	1.00	0.15	0.005	0.08	7.50	4.00

* Properties as per ASTM B584

Mechanical Properties (minima, all sizes, continuous cast)

UTS	207 N/mm ²
0.2% Proof Strength	97 N/mm ²
Elongation	15%

* Properties as per ASTM B584

Material Specifications: BS1400 LB4, C93200, SAE660, SigmaBronze 7



Thames Stockholders

Unit 5W, Woodall Road, Redburn Industrial Estate
Ponders End, Enfield, Middlesex EN3 4LQ

Tel: +44 (0)20 8805 3282



SCAN ME



sales@thamesstock.com



www.thamesstock.com

All information in our data sheet is based on approximate testing and is stated to the best of our knowledge and belief. It is presented apart from contractual obligations and does not constitute any guarantee of properties or of processing or application possibilities in individual cases. Our warranties and liabilities are stated exclusively in our terms of trading.